

US WHEELER

HANGZHOU WHEELER GENERAL MACHINERY INCORPORATED CO.,LTD

Add:
NO.288 Shunfeng Road,Linping District

Tel:
+86 571 8369 5216

Fax:
+86 571 8369 5836

E mail:
info@wheeler-us.com



For more information
please follow the
Official WeChat account

400 780 1898
24/7 Service Hotline.

Machine Tool Lifetime Service

We provide on-call service 24/7. If you encounter any equipment maintenance and repair problems, please contact us. If you have any suggestions, please log in to the company's official website to leave a message.
www.wheeler-us.com
Thank you for your reference !



Sample parameters and information are subject to change without prior notice, and the final data is subject to the technical agreement.

HL-LT02311-01-500

LT Series

FULL FUNCTIONAL CNC LATHE



US WHEELER

INDUSTRIAL ROBOT/
CNC MACHINETOOLS/
SMART FACTORY

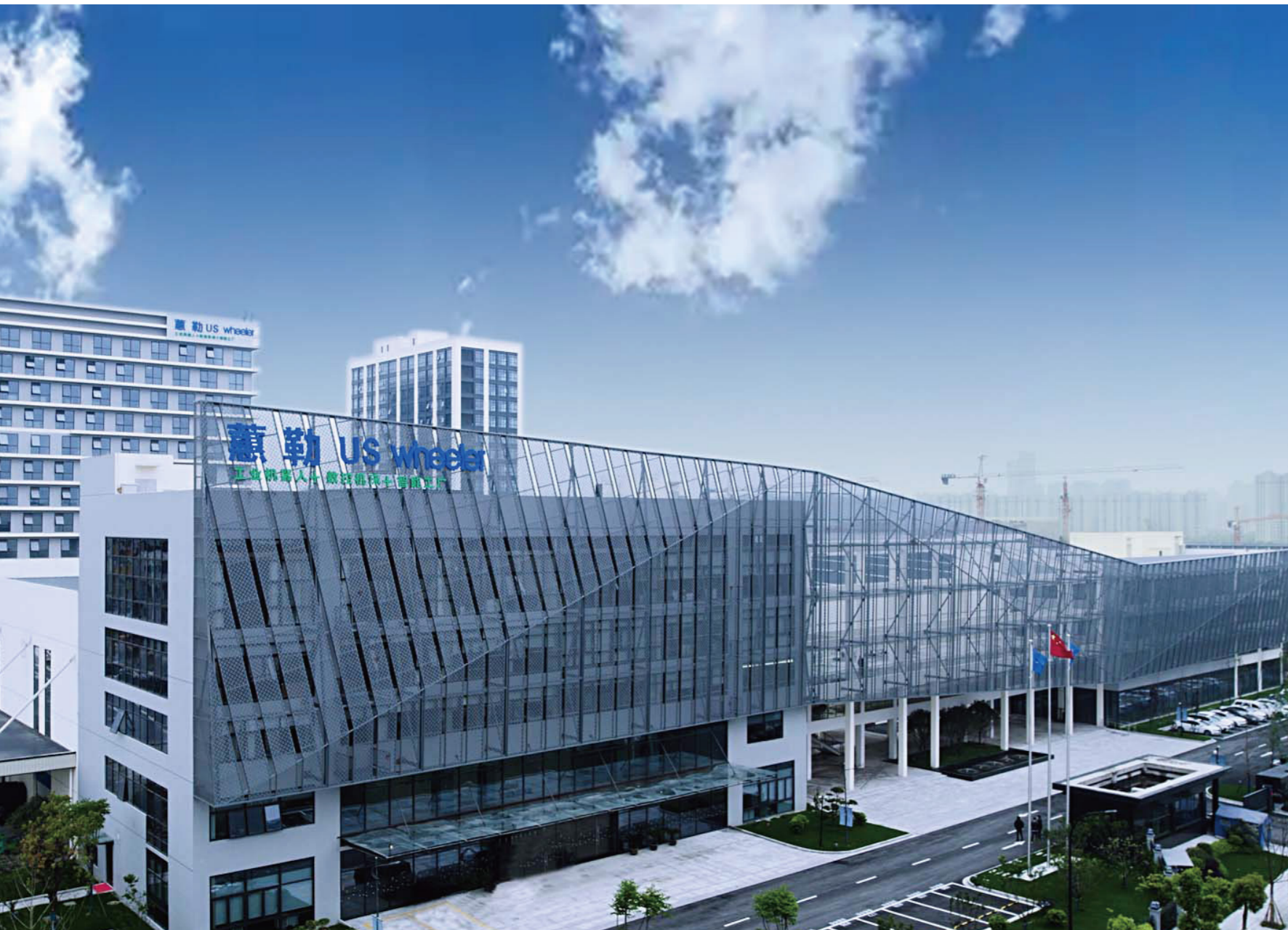
ABOUT US

Hangzhou Wheeler Intelligent General Machinery Incorporated Co.,Ltd is a national high-tech enterprise focusing on CNC machining equipment, machine tool loading and unloading automation, digital factories, and non-standard fixture design and manufacturing. The company was established in January 2015, and its operation center is located in Linping Economic Development Zone, Hangzhou. The company currently has more than 300 employees and an efficient professional technical R&D team, including more than 60 professional and technical personnel with various intermediate and senior technical titles (engineers). The company has a 5,000 square meter R&D center and a 43,000 square meter production and debugging base, and owns more than 50 patent technologies. It has offices and after-sales service outlets in Shanghai, Jiangsu, Anhui, Shandong, Henan, Jilin, Chongqing, Ningbo, Taizhou, Wuhan, Xi'an, Zhengzhou, etc. The company's products are exported to Turkey, Egypt, South Africa, Brazil, Australia, Singapore, Malaysia, Thailand and other countries.

Our
Certification



The company's main products include machining equipment, machine tool loading and unloading robots, machine tool fixtures, peripheral automated logistics equipment, and robot integration systems. It is a strategic partner of robot companies such as Germany's KUKA and Switzerland's ABB. It provides customers with mechanical processing automation technology solutions, a full set of automation equipment, technical consulting, and comprehensive after-sales and technical services. The products are widely used in mass production industries such as automotive parts processing and engineering machinery.



LT SERIES LATHE FULL FUNCTIONAL CNC LATHE

The full range of CNC lathes are high-precision, high-efficiency automated lathes. Equipped with multi-station turrets, they have a wide range of processing capabilities. They also have linear interpolation, circular interpolation and various compensation functions, which have played a good economic role in the mass production of complex parts.

LT-210 / LT210M / LT210i



LT-300 / LT-300M / LT-300A
LT-300L / LT-300S / LT300SY

LT-400 / LT-400L / LT-400XL / LT-400M / LT400-LM / LT-400XLM

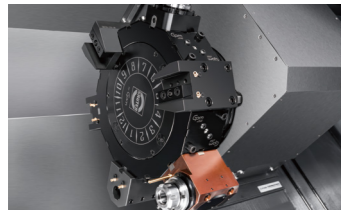
LV-500 / LV-800

+ Scope of application

The full range of machine tools is mainly used to process various shaft and disc parts. It can turn various threads, arcs, cones and internal and external surfaces of rotating bodies, and can meet the speed requirements of high-speed cutting of ferrous and nonferrous metal materials. It is suitable for processing parts in industries such as plumbing equipment, valves, electrical appliances, instruments, automobiles, motorcycles, and bearings. It has the advantages of high speed, high efficiency, high reliability, good consistency in parts processing, and little influence from human factors. The processing accuracy can reach IT6-IT7 level.



+ Basic configuration



+ Turret

Imported 12-station servo turret with hydraulic locking is standard. Power turret and hydraulic turret can be selected according to needs.



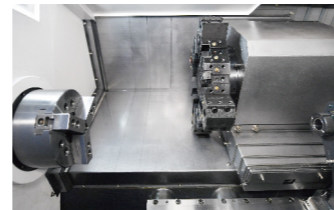
+ Hydraulic Chuck

All series are equipped with hollow hydraulic chuck.



+ Chip conveyor

Chain plate chip conveyor is suitable for fine iron chips produced by casting processing; various rolled, ball-shaped and strip-shaped chips produced by steel processing.



+ Base

The machine adopts an integrated inclined Base with good rigidity and reasonable structure, which is conducive to chip removal and cooling during machining.

+ Rapid Traverse

The use of high-precision linear roller guides ensures the moving speed and high rigidity and high-precision moving effect, greatly reducing non-cutting time. Each axis uses a maintenance-free high-torque AC servo motor and a high-precision ball screw direct drive, with fast response speed, small backlash and low noise.



BASIC CONFIGURATION

LT-210 / LT-300 Servo Tool Turret

The cutter head rotates with a servo motor and a special planetary reducer design.

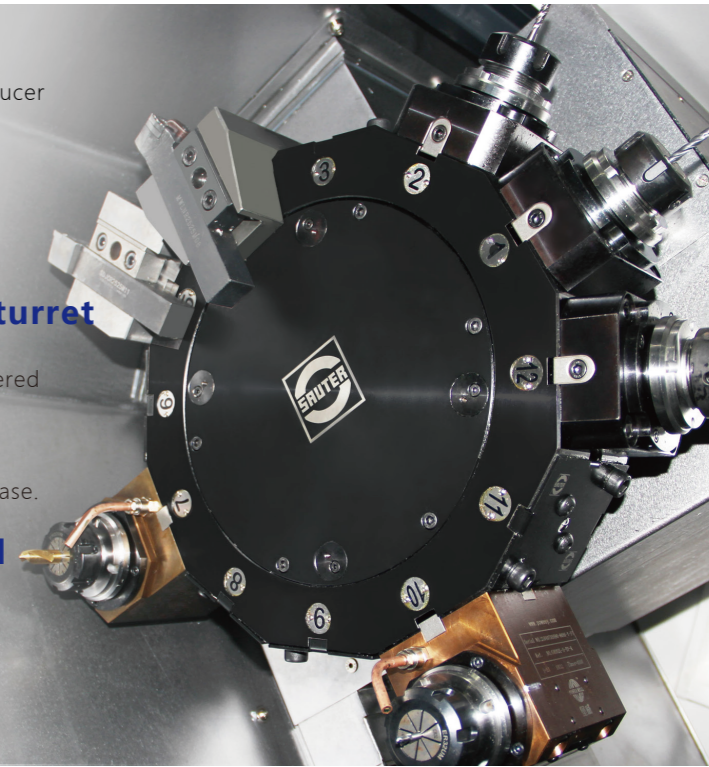
Fast tool change speed without tool mess.

LT-210M / LT-300M Equipped with power turret

The turning and milling machine can be equipped with a SAUTER powered tool turret, which has an excellent design structure, good rigidity, and extremely fast tool change speed, and can handle heavy cutting with ease.

LT - 400 / LV - 500 / LV - 800 are equipped with a hydraulic turret.

High positioning accuracy, strong carrying capacity, good stability and compact structure.

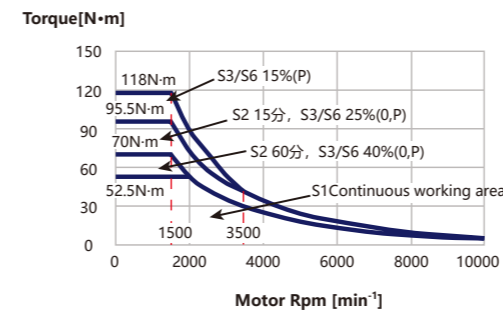


Equipped with a 12-station heavy-load servo turret and hydraulic locking, it ensures high precision and high surface finish of the cutting products and improves the service life of the tool while ensuring rigidity and cutting ability.

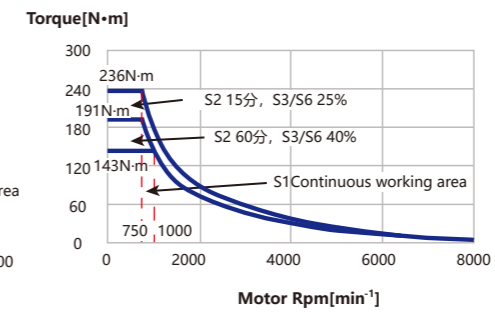
Tool Position **12 position**

Tool changer time **0.35 s (adjacent)**

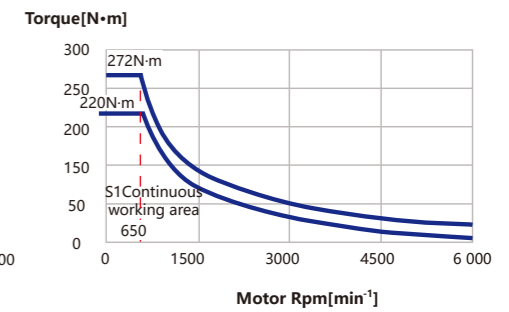
+ Spindle power&torque Diagram



LT-210 Spindle motor Diagram

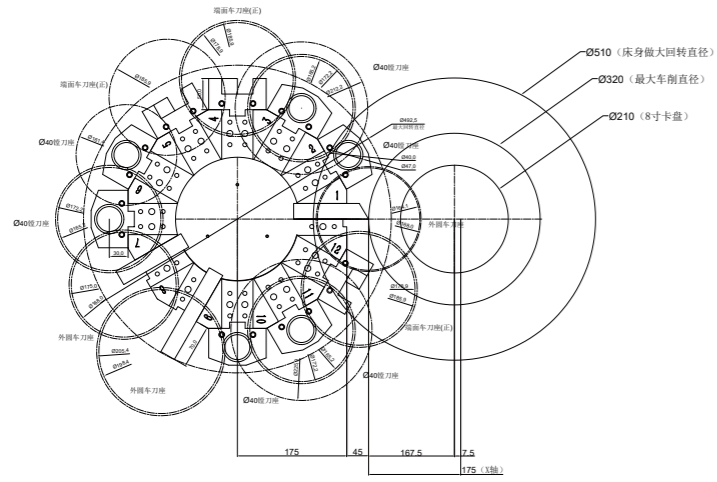


LT-300(LV-500) Spindle motor Diagram

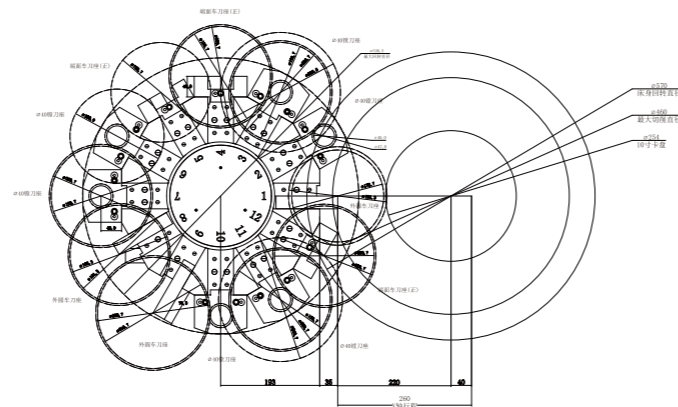


LT-400(LV-800) Spindle motor Diagram

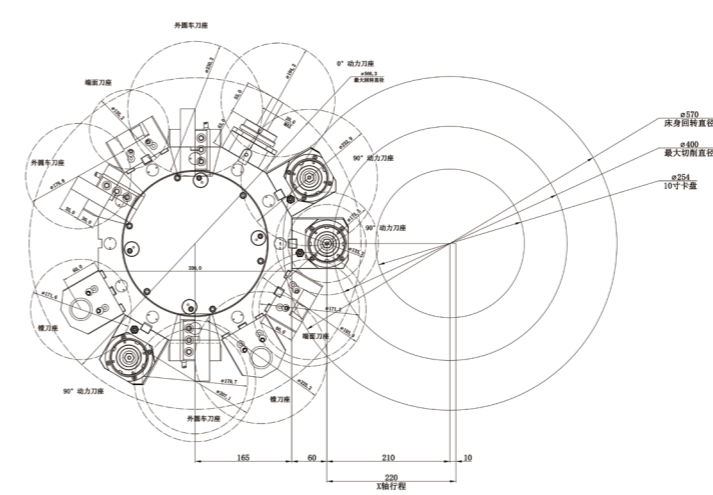
Tool interference diagram



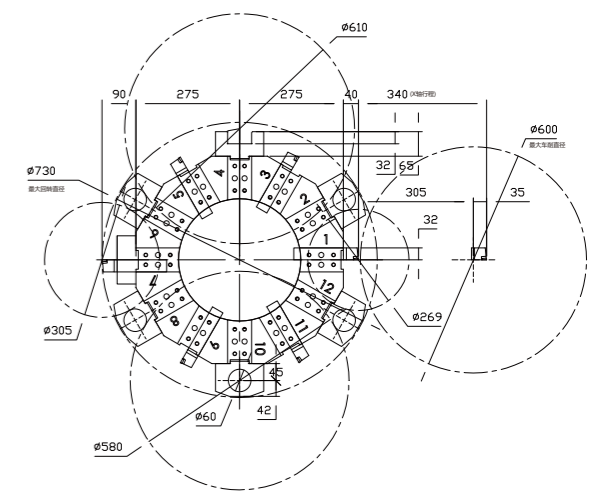
LT-210



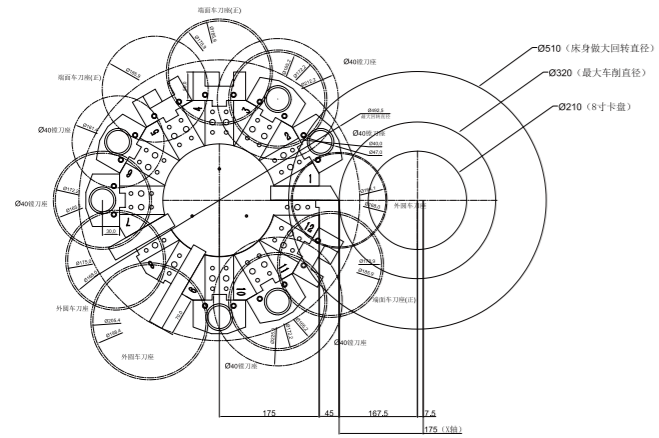
LT-300/LT-300A



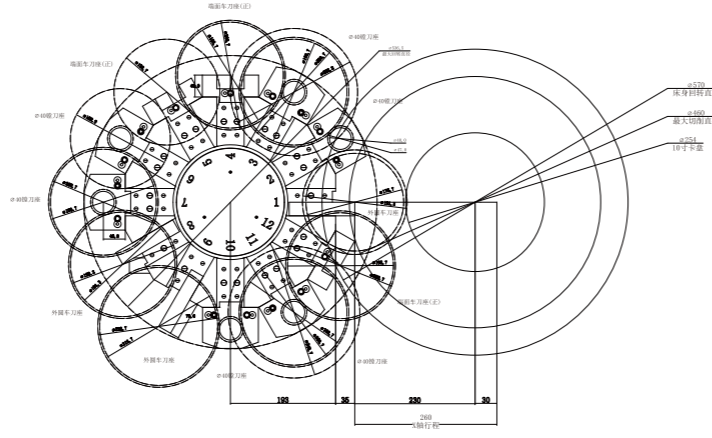
LT-300M



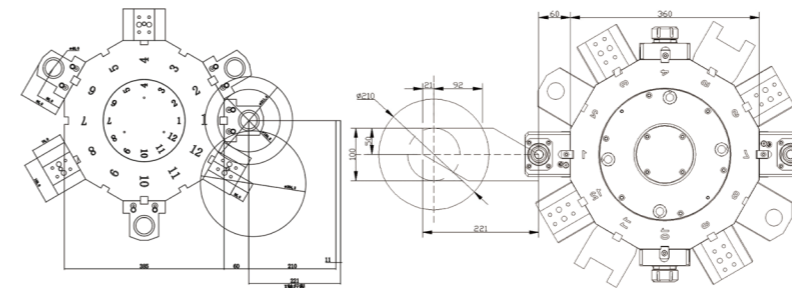
LT-400/LT-400L



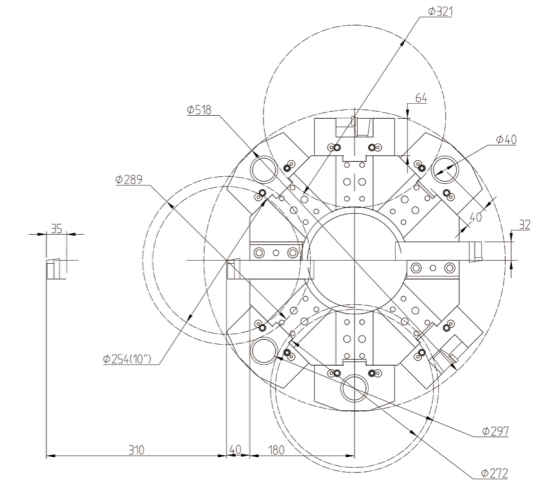
LT-210i



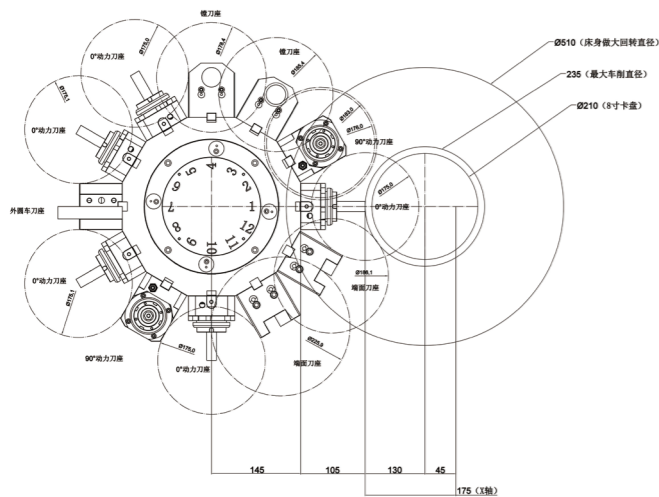
LT-300L



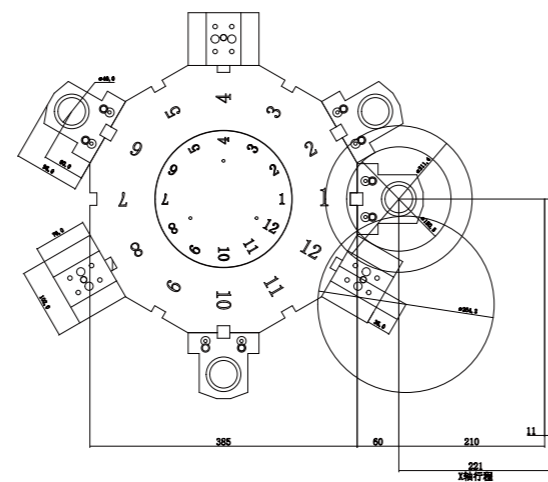
LT-300SY(with Y-axis)



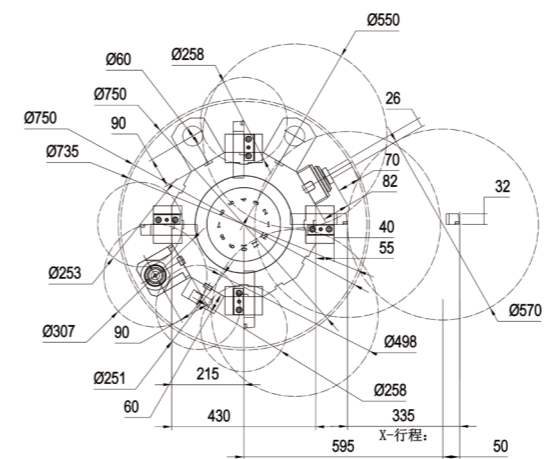
LV-500



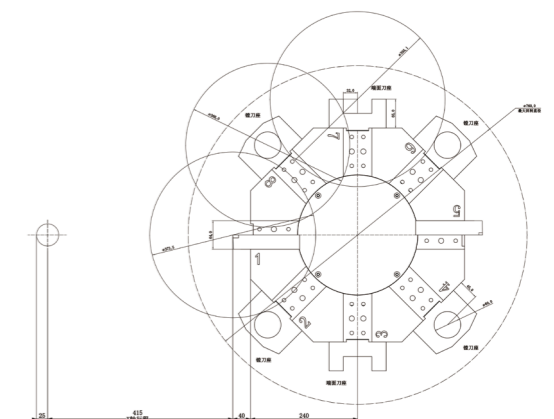
LT-210M



LT-300S

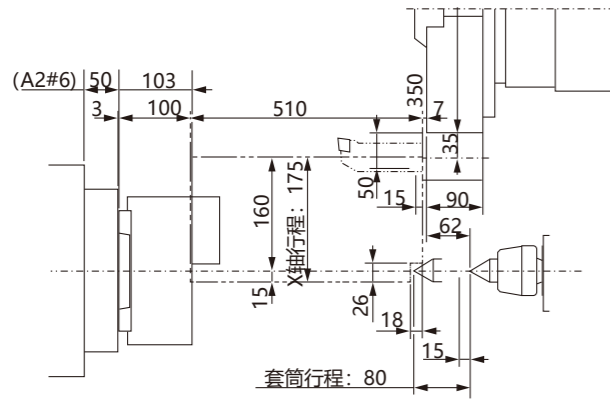


LT-400M/LT-400LM

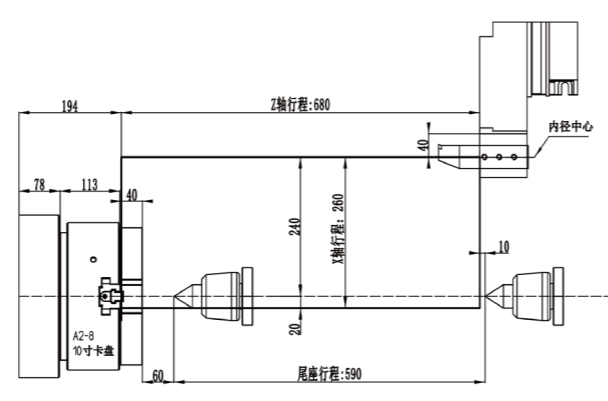


LV-800

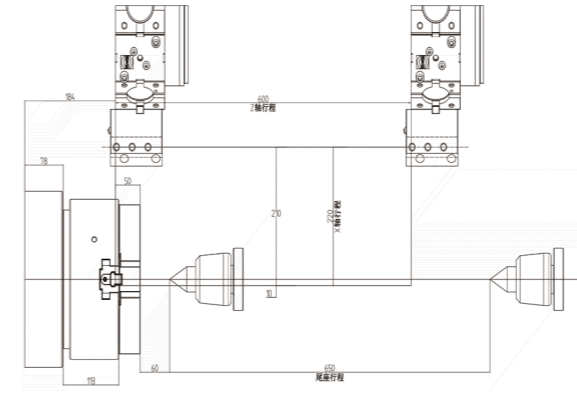
+ Processing Scope



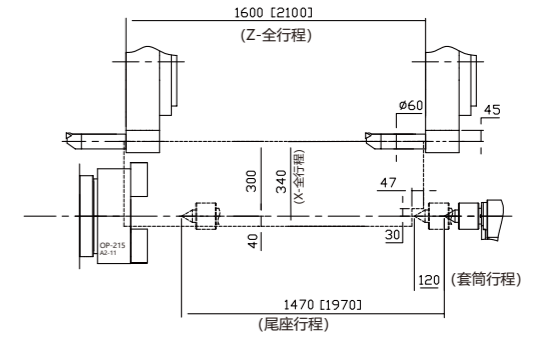
LT-210



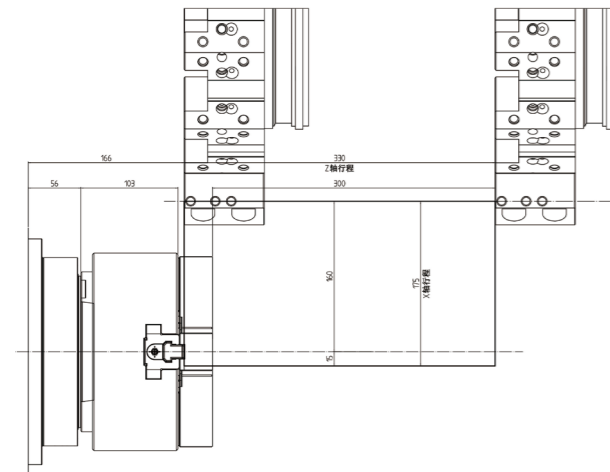
LT-300A



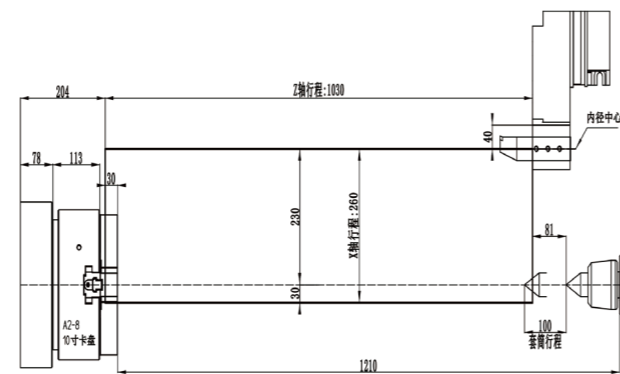
LT-300M



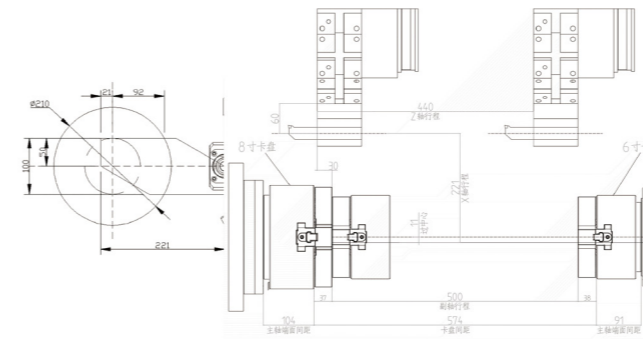
LT-400(LT-400L)



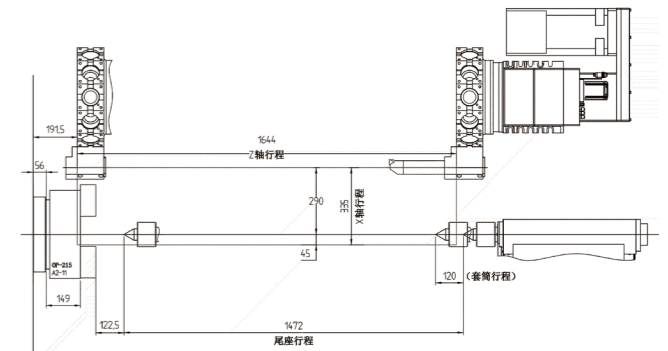
LT-210i



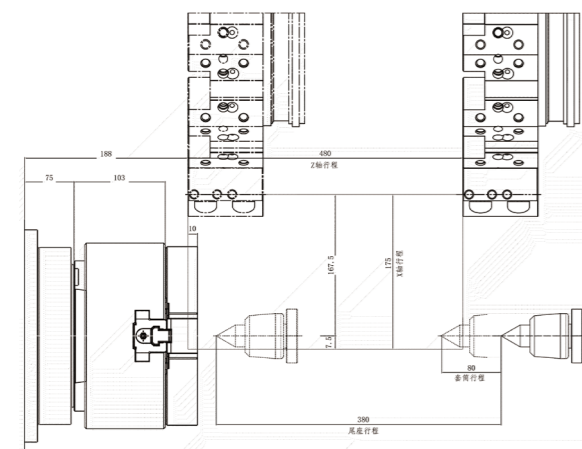
LT-300L



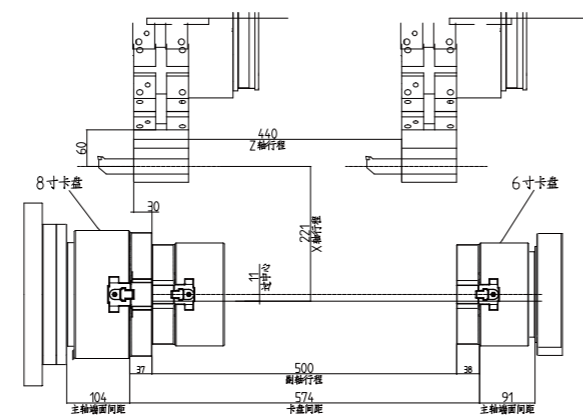
LT-300SY(with Y-axis)



LT-400M



LT-210M



LT-300S

+ Processing ability (Linear Guideway)

OD Turning

item	data
Cutting feedrate	212 m/min
Feed	0.18 mm/r
Spindle speed	1500 r/min
Cutting depth	4.5 mm

U - Drill

item	data
Cutting feedrate	151 m/min
Feed	0.22 mm/r
Spindle speed	1500 r/min
Drill hole Dia	32 mm

Grooving

item	data
Cutting feedrate	151 m/min
Feed	0.22 mm/r
Spindle speed	600 r/min
Slot width	8 mm

+ Processing ability (Box Guideway)

OD Turning

item	data
Cutting feedrate	200 m/min
Feed	0.3 mm/r
Spindle speed	270 r/min
Cutting depth	7 mm

U - Drill

item	data
Cutting feedrate	125 m/min
Feed	0.2 mm/r
Spindle speed	796 rpm
Drill hole Dia	φ50 mm

ID Turning

item	data
Cutting feedrate	210 m/min
Feed	0.3 mm/r
Cutting Depth	5 mm
Tool Fc	3

OPERATION SYSTEM



FANUC System

New operate experience

- Equipped i HMI(Type0)
- Max. accept 21.5" PANEL i H Pro
- Customized design according to customer needs

Higher operation efficiency

- System equipped with servo selection software Servo sizer
- Insulation deterioration detection function
- Fault detection-diagnosis function provides fast troubleshooting
- Preventing machine damage during power outages

Better performance

- Intelligent servo control
- Surface fine processing technology, providing high-quality processing
- Efficient processing technology machining



Operational Procedure

- The operation process is simplified, providing clear processing result selection. The processing plan can be automatically generated by inputting the final data, making the system operation easier and faster, and facilitating faster hands-on operation. At the same time, the system will display the cutting path through dynamic demonstration to make the processing plan clearer.

AUTOMATIC MANUFACTURE

Wheeler supports LT's full range of automation solutions, providing a full range of solutions including bar transport systems, automatic loading and unloading systems and robot systems, providing customers with turnkey solutions to build production lines in a short time.



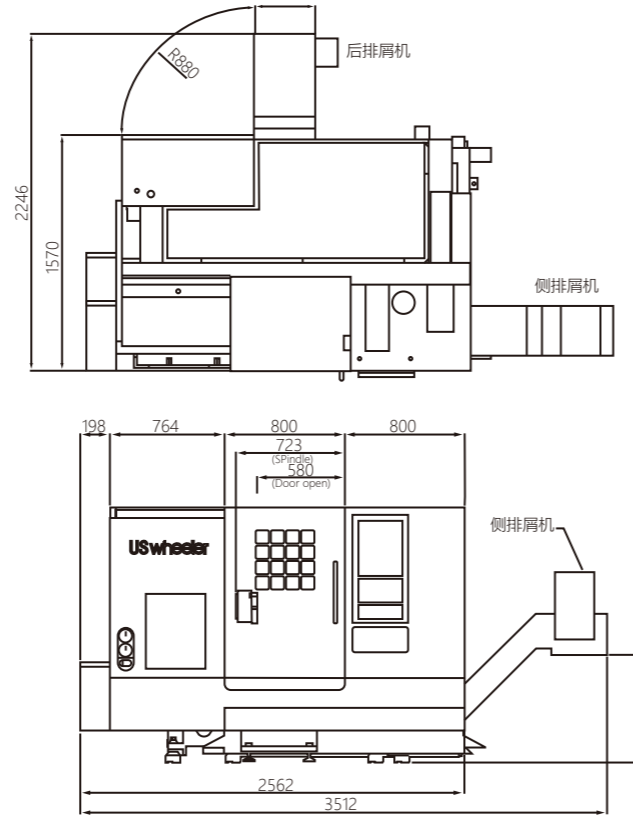
+ Production features

- 1) It adopts built-in truss, which is compact and light in structure. It is installed inside the machine tool and forms a set of fully automatic production equipment with the CNC machine tool;
- 2) It is suitable for single-process parts processing by a single CNC machine tool, and batch unmanned production;
- 3) It adopts brand absolute bus servo, and the wiring is simple and easy to maintain;
- 4) Customized silos can be paired with silo systems suitable for various products.

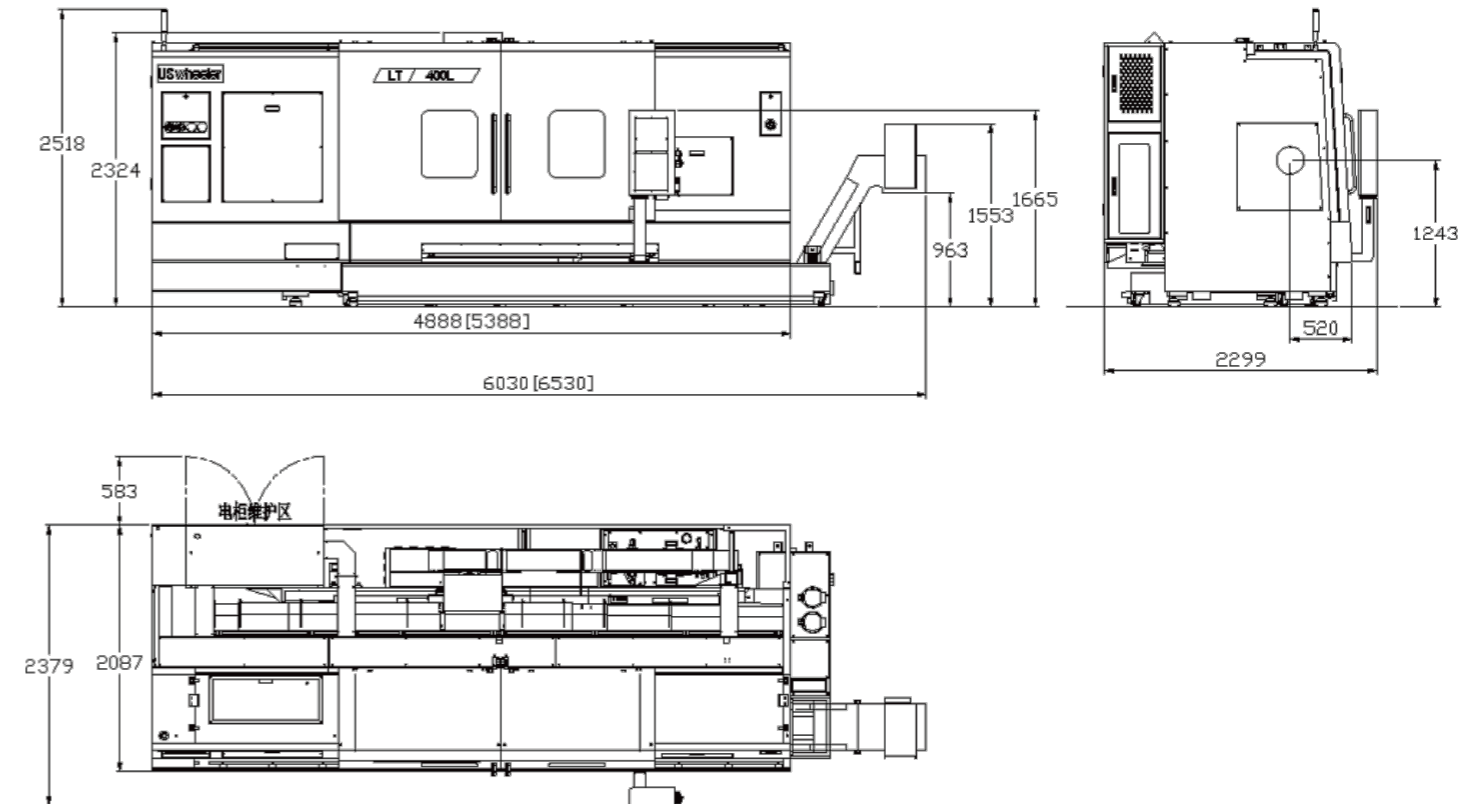


DIAMETER

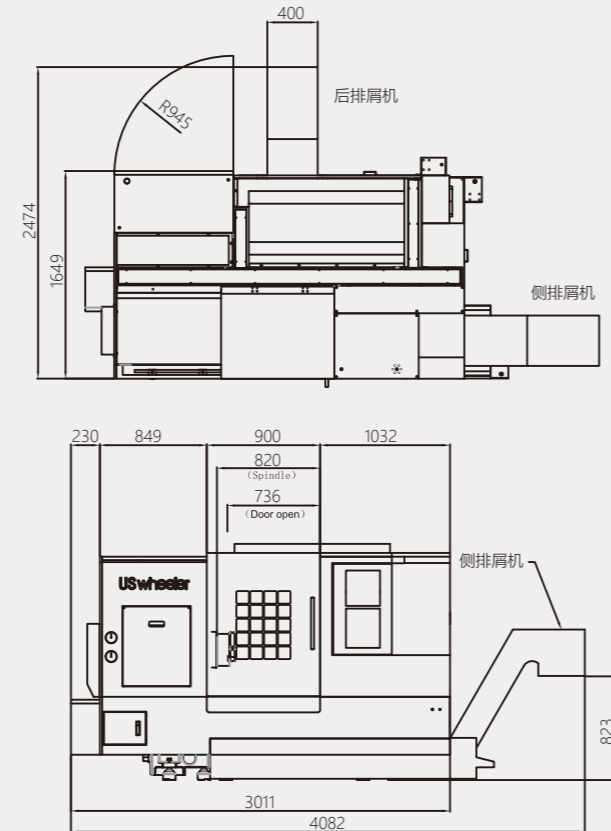
+ LT-210 Series



+ LT-400 Series



+ LT-300 Series



STANDARD CONFIGURATION

- FANUC control system
- 10.4 inch colored LCD screen
- Electric cabinet heat exchanger
- Auto Lubrication device
- Sheet metal Cover
- Dust-proof device for electric cabinet
- Warning light
- Cutting fluid cooling device
- Working light
- 3-color warning light
- Foundation block
- Transformer
- Hydraulic station



FANUC controller

Easy operation, high precision control system



Spindle

High-performance spindle enables high efficiency and high-precision machining.



Tool Turret

Multi-station turret meets the processing and production needs of different products

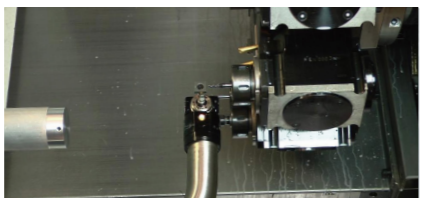


Lead Screw

The screw rod is precisely pre-loaded to make it more rigid and effectively reduce thermal expansion and contraction during use, thereby increasing its service life and precision retention.

OPTIONAL CONFIGURATION

- External Air Blowing of Fixture
- Fixture flushing
- Automatic top door
- Chuck clamping and unclamp Detection
- Water gun
- Tool setter
- High pressure flushing



Oil Skimmer

Effectively remove the floating oil of cutting fluid, maintain the performance of cutting fluid and extend the service life of cutting fluid



Safety Grating

Ensure the safety of operators and ensure the normal and safe operation of equipment.



Tool Setter

Measuring instrument used to measure and (or) adjust the radial and axial dimensions of the cutting edge of CNC lathe tools during in-machine presetting.



Oil Mist Collector

The multi-stage and multi-layer filtering principle is adopted to efficiently filter the oil mist generated during the processing.

DETAILED INFORMATION

			LT-210	LT-210i	LT-210M	
Processing capacity	Max. swing Dia. over bed	mm	510	510	510	
	Max. turning Dia	mm	320	320	235	
	Recommended turning Dia	mm	210	210	210	
	Bar Dia	mm	51	51	51	
	Max. turning length	mm	500	300	450	
	Distance from spindle center to ground	mm	1050	1050	1050	
(Built-in) Spindle	Chuck size	inch	8	8	8	
	Spindle Nose		A2-6	A2-6	A2-6	
	Max. Spindle Speed	rpm	4500	4500	4500	
	Spindle motor power	Kw	11	11	11	
	Spindle motor torque	Nm	177	107	177	
	Spindle bearing Dia	mm	100	100	100	
	Spindle bore	mm	66	66	66	
Servo Axis	X/Z axis travel	mm	175/510	175/330	175/510	
	X/Z rapid traverse	m/min	30/24	30/24	30/24	
	X/Z axis servo motor torque	Nm	12/12	11.5/11.5	12/12	
	X/Z axis servo motor rpm	rpm	3000/3000	3000/3000	3000/3000	
	X/Z axis lead screw Dia	mm	Φ28/Φ32	Φ28/Φ32	Φ28/Φ32	
	X/Z axis lead screw pitch	mm	10/12	10/12	10/12	
	Cutting feedrate	mm/min	1-10000	1-10000	1-10000	
	Min. feed	mm	0.001	0.001	0.001	
	(Power) Tool turret	Capacity	No.	12	12	12
		Turret Type		Servo turret+ hydraulic lock	Servo turret+ hydraulic lock	Power turret+ hydraulic lock
Power turret Spec			-	-	BMT45-ER25, MaxΦ16mm	
Power turret motor Spec			-	-	4000rpm/2.7Kw/12Nm	
OD tool size		mm	25*25	25*25	20*20	
Max. boring bar Dia.		mm	40	40	Φ32	
Tailstock	Type		Manual	-	Manual/Servo	
	Taper		MT #4	-	MT #5	
	Position		To chuck 24-480mm	-	To chuck 70-550mm	
Others	Weight	Kg	3200	2700	3500	
	Floor space	mm	2570*2300 (STD. Rear)	2300* 2300 (STD. Rear)	2570* 2300	
	Height	mm	1750	1750	1750	
	Power capacity	KVA	25	25	25	
	Lubricant fluid capacity	L	3	2	3	
	Cutting fluid capacity	L	120	120	120	
Controller	* () means OPT.		FANUC	FANUC	FANUC (SIEMENS)	

		LT-300A	LT-300M	LT-300L
Processing capacity	Max. swing Dia. over bed	mm	570	570
	Max. turning Dia	mm	460	400
	Recommended turning Dia	mm	260	260
	Bar Dia	mm	74	74
	Max. turning length	mm	640	550
	Distance from spindle center to ground	mm	1050	1050
(Built-in) Spindle	Chuck size	inch	10	10
	Spindle Nose		A2-8	A2-8
	Max. Spindle Speed	rpm	3000	3000
	Spindle motor power	Kw	15/18.5	15/18.5
	Spindle motor torque	Nm	472	472
	Spindle bearing Dia	mm	130	130
	Spindle bore	mm	87	87
Servo Axis	X/Z aixe travel	mm	260/680	220/600
	X/Z rapid traverse	m/min	30/24	30/24
	X/Z axis servo motor torque	Nm	12/22	12/22
	X/Z axis servo motor rpm	rpm	3000/3000	3000/3000
	X/Z axis lead screw Dia	mm	Φ32/Φ40	Φ32/Φ40
	X/Z axis lead screw pitch	mm	10/10	10/10
	Cutting feedrate	mm/min	1-10000	1-10000
	Min. feed	mm	0.001	0.001
(Power) Tool turret	Capacity	No.	12	12
	Turret Type		Servo turret+hydraulic lock	power turret + hydraulic lock
	Power turret Spec		-	BMT55-ER32, MaxΦ20mm
	Power turret motor Spec		-	4000rpm/2.7Kw/12Nm
	OD tool size	mm	25*25	25*25
	Max. boring bar Dia.	mm	40	32
Tailstock	Type		servo	servo
	Taper		To chuck, 60-650mm	To chuck, 60-650mm
	Position		MT5	MT5
Others	Weight	Kg	3900	3900
	Floor space	mm	3010*2500 (STD. Rear)	3010 * 2500 (STD. Rear)
	Height	mm	1900	1900
	Power capacity	KVA	30	32
	Lubricant fluid capacity	L	2	2
	Cutting fluid capacity	L	180	180
Controller	* () means OPT.	FANUC (SIEMENS)	FANUC (SIEMENS)	FANUC (SIEMENS)

		LT-300LM	LT-300S	LT-300SY
Processing capacity	Max. swing Dia. over bed	mm	570	610
	Max. turning Dia	mm	400	400
	Recommended turning Dia	mm	260	210
	Bar Dia	mm	74	52
	Max. turning length	mm	920	380
	Distance from spindle center to ground	mm	1050	1050
(Built-in) Spindle	Chuck size	inch	10	8" (Main) /6" (Sub)
	Spindle Nose		A2-8	A2-6 (Main) /A2-5 (Sub)
	Max. Spindle Speed	rpm	3000	4000 (Main) /5000 (Sub)
	Spindle motor power	Kw	15/18.5	15/10
	Spindle motor torque	Nm	472	167.1 (Main) /90 (Sub)
	Spindle bearing Dia	mm	130	φ100 (Main) /φ80 (Sub)
	Spindle bore	mm	87	φ66 (Main) /φ56 (Sub)
Servo Axis	X/Z aixe travel	mm	220/950	221/440/500
	X/Z rapid traverse	m/min	24/20	12/24/24
	X/Z axis servo motor torque	Nm	12/22	12/12
	X/Z axis servo motor rpm	rpm	3000/3000	3000/3000
	X/Z axis lead screw Dia	mm	Φ32/Φ40	Φ32/Φ40/Φ40
	X/Z axis lead screw pitch	mm	10/12	10/12/12
	Cutting feedrate	mm/min	1-10000	1-10000
	Min. feed	mm	0.001	0.001
(Power) Tool turret	Capacity	No.	12	12
	Turret Type		Power turret+hydraulic lock	Servo turret+hydraulic lock
	Power turret Spec		BMT55-ER32, Maxφ20mm	-
	Power turret motor Spec		4000rpm/2.7Kw/12Nm	-
	OD tool size	mm	25*25	25*25
	Max. boring bar Dia.	mm	32	40
Tailstock	Type		hydraulic	-
	Taper		MT5	-
	Position		0-1150	-
Others	Weight	Kg	5500	4900
	Floor space	mm	4600*1950 (STD. Rear)	2590*2400 (STD. Rear)
	Height	mm	1900	1745
	Power capacity	KVA	32	40
	Lubricant fluid capacity	L	2	2
	Cutting fluid capacity	L	400	200
Controller	* () means OPT.	FANUC (SIEMENS)	FANUC (SIEMENS)	FANUC

			LT-400	LT-400L	LT-400XL
Processing capacity	Max. swing Dia. over bed	mm	790	790	790
	Max. turning Dia	mm	600	600	600
	Recommended turning Dia	mm	380	380	380
	Bar Dia	mm	115	115	115
	Max. turning length	mm	1500	2000	3000
	Distance from spindle center to ground	mm	1245	1245	1245
(Built-in) Spindle	Chuck size	inch	15	15'	15'
	Spindle Nose		A2-11	A2-11	A2-11
	Max. Spindle Speed	rpm	2000	2000	2000
	Spindle motor power	Kw	15/18.5	15/18.5	15/18.5
	Spindle motor torque	Nm	816	816	816
	Spindle bearing Dia	mm	Φ160	Φ160	Φ160
	Spindle bore	mm	Φ127	Φ127	Φ127
Servo Axis	X/Z aixe travel	mm	340/1600	340/2100	340/3100
	X/Z rapid traverse	m/min	12/12	12/12	12/12
	X/Z axis servo motor torque	Nm	40	40	40
	X/Z axis servo motor rpm	rpm	2000	2000	2000
	X/Z axis lead screw Dia	mm	Φ36/Φ50	Φ36/Φ50	Φ36/Φ50
	X/Z axis lead screw pitch	mm	10/10	10/10	10/10
	Cutting feedrate	mm/min	1-10000	1-10000	1-10000
	Min. feed	mm	0.001	0.001	0.001
(Power) Tool turret	Capacity	No.	12	12	12
	Turret Type		Hydraulic turret+ hydraulic lock	Hydraulic turret+ hydraulic lock	Hydraulic turret+ hydraulic lock
	Power turret Spec		-	-	-
	Power turret motor Spec		-	-	-
	OD tool size	mm	32*32	32*32	32*32
	Max. boring bar Dia.	mm	60	60	60
Tailstock	Type		Programmable	Programmable	Programmable
	Taper		MT #6	MT #6	MT #6
	Position	mm	137-1600	137-2100	137-2100
Others	Weight	Kg	11000	12000	14000
	Floor space	mm	6050*2300	6550* 2300	7650* 2495
	Height	mm	2520	2520	2520
	Power capacity	KVA	30	30	30
	Lubricant fluid capacity	L	8	8	8
	Cutting fluid capacity	L	350	400	400
Controller	* () means OPT.		FANUC (SIEMENS)	FANUC (SIEMENS)	FANUC (SIEMENS)

			LT-400M	LT-400LM	LT-400XLM
Processing capacity	Max. swing Dia. over bed	mm	790	790	790
	Max. turning Dia	mm	550	550	550
	Recommended turning Dia	mm	380	380	380
	Bar Dia	mm	115	115	115
	Max. turning length	mm	1500	2000	3000
	Distance from spindle center to ground	mm	1245	1245	1245
(Built-in) Spindle	Chuck size	inch	15	15	15
	Spindle Nose		A2-11	A2-11	A2-11
	Max. Spindle Speed	rpm	2000	2000	2000
	Spindle motor power	Kw	15/18.5	15/18.5	15/18.5
	Spindle motor torque	Nm	816	816	816
	Spindle bearing Dia	mm	Φ160	Φ160	Φ160
	Spindle bore	mm	Φ127	Φ127	Φ127
Servo Axis	X/Z aixe travel	mm	325/1600	325/2100	325/3100
	X/Z rapid traverse	m/min	12/12	12/12	12/12
	X/Z axis servo motor torque	Nm	40	40	40
	X/Z axis servo motor rpm	rpm	2000	2000	2000
	X/Z axis lead screw Dia	mm	Φ36/Φ50	Φ36/Φ50	Φ36/Φ50
	X/Z axis lead screw pitch	mm	10/10	10/10	10/10
	Cutting feedrate	mm/min	1-10000	1-10000	1-10000
	Min. feed	mm	0.001	0.001	0.001
(Power) Tool turret	Capacity	No.	12	12	12
	Turret Type		Power turret+ hydraulic lock	Power turret+ hydraulic lock	Power turret+ hydraulic lock
	Power turret Spec		BMT75-ER40 Maxp26mm	BMT75-ER40 Maxp26mm	BMT75-ER40 Maxp26mm
	Power turret motor Spec		4000rpm /7.5kw/35Nm	4000rpm /7.5kw/35Nm	4000rpm /7.5kw/35Nm
	OD tool size	mm	32*32	32*32	32*32
	Max. boring bar Dia.	mm	60	60	60
Tailstock	Type		Programmable	Programmable	Programmable
	Taper		MT #6	MT #6	MT #6
	Position	mm	410-1595	410-2095	410-2095
Others	Weight	Kg	11000	12000	14000
	Floor space	mm	6050*2300 (STD. Rear)	6550*2300 (STD. Rear)	7650*2400 (STD. Rear)
	Height	mm	2520	2520	2520
	Power capacity	KVA	35	35	35
	Lubricant fluid capacity	L	8	8	8
	Cutting fluid capacity	L	350	400	400
Controller	* () means OPT.		FANUC (SIEMENS)	FANUC (SIEMENS)	FANUC (SIEMENS)

LV Series Vertical Turning Lathe

Vertical lathes are used for processing large and medium-sized parts, and realize strong, high-precision and high-efficiency processing, especially for processing large parts such as brake drums, brake discs, wheel bodies, transmission wheels, hubs, transmission gears, snap rings, pulleys, etc. in the automotive, power generation, shipbuilding, metallurgy, mining and other industries. With high precision and efficiency, it is suitable for processing large quantities of parts.



+Mechanical structure



+Chuck



+Tool turret

High - quality Castings: The whole machine adopts HT300 high-grade resin sand castings, which are tempered and vibrated to remove internal stress.

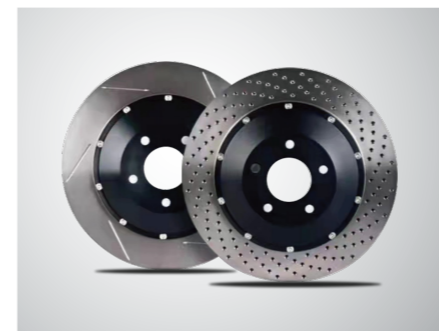
Square Base Structure: The spindle box surface, bed mounting surface, and main motor surface are processed in one sequence to ensure accuracy; save space, good seismic performance, good overall rigidity, and good processing stability; Spindle: The spindle box and the base are integrated into a structure with stronger rigidity. The spindle adopts four front and two rear original Japanese imported bearings, which have better accuracy and life.

Double axis Linear Guideway: The double axis adopt roller linear guideways to withstand greater cutting forces.

Base and work table: The bed is widened, the Z-axis guideway has a larger span, and the seismic performance is better.

Scope of application

The vertical lathe is an integral box-type structure with a rectangular cross-section column, good rigidity, heavy cutting resistance, and strong precision retention. The spindle has a large diameter and a good bearing structure, which can perform high-precision and powerful cutting. The longitudinal and lateral movements adopt a cross-slide structure, with a full protection design, beautiful appearance, and easy operation and maintenance.



Specification

	parameter	LV-500	LV-800
Processing Capacity	Max.swing Dia over bed	650mm	920mm
	Max. turning Dia	550mm	830mm
	Max. turning length	465mm	780mm
Spindle	Spindle motor power	15/18.5 kW	15/18.5 kW
	Spindle motor torque	590 N·m	680N·m
	Max. Spindle Speed	2000rpm	2000rpm
	Chuck size	12 inch	15 inch
Servo axis	X/Z axis Rapid traverse	24/24 m/min	16/16 m/min
	X / Z servo motor torque	12/22 N·m	12/22 N·m
	Cutting feedrate	1-10000 mm/min	1-10000 mm/min
Travel	X axis travel	310mm	495mm
	Z axis travel	500mm	780mm
Tool turret	Capacity	8	8
	Type	Hydraulic Turret + Hydraulic Lock	Hydraulic Turret + Hydraulic Lock
	Max. boring bar Dia	Φ40mm	Φ50mm
others	Floor space& Height	1700*3060*2900mm	2100*3132*3636mm
	Weight	6100Kg	9400Kg
	Controller	FANUC-0iTF PLUS	FANUC-0iTF PLUS